

ALPHACOM E20

FOR 19" RACK MOUNTING - AC - VERSION 10



when communication is **critical**

FEATURES

- **New generation multiservice platform with integrated media processing engine, packet processing engine and HW encryption**
- **Made for critical communication and security solutions**
- **Best of both worlds – supports a mix of IP and traditional services within the same node**
- **Backward compatible**
- **SIP interoperability with VoIP systems and equipment**
- **Wide range of open interfaces**
- **Superb audio quality in all environments**
- **New services through Web i.e. remote programming**
- **Networking capabilities to extend your solution geographically**



DESCRIPTION

The AlphaCom E combines the best of the present advanced AlphaCom system with the latest IP and embedded networking technologies. When entering the IP world, no compromise has been made. The AlphaCom E provides the complete set of existing services, quality, reliability and security characteristics for which AlphaCom has always been recognized. Some of the special features it brings into the IP domain are wideband (7 kHz) audio, a built-in firewall, integrated Web and SIP server, hardware encryption and low latency switching. In addition to these important characteristics, a new set of innovative services has been introduced to improve cost efficiency, service capabilities and system operation. The cabinet has room for installation of totally 20 circuit boards, one AMC-IP processor board, one APC program & clock board and up to 18 feature boards. The exchange also includes a mains power supply and a cooling fan. Several exchanges can be interconnected on AlphaNet over IP, as well as the traditional methods, both locally and worldwide. All communication and services are available throughout the entire network.

The AlphaCom E-series includes extended integration of different kinds of communication and alarm systems, access control, CCTV, public address, public telephones and a variety of features and solutions that can be added when desired. It is easy to interface to 3rd party systems to create special applications. The new technology allows remote programming, logging and maintenance via AlphaPro, Syslog and standard web browsers.

SPECIFICATIONS

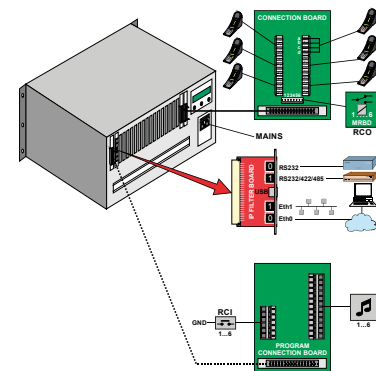
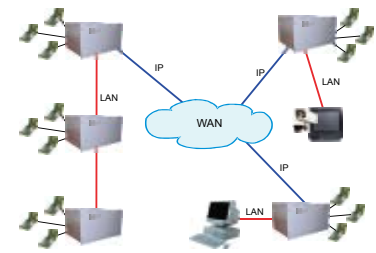
Dimensions (W x H x D)	482 x 265 x 365 mm
Weight	17 kg
Mounting	Input voltage
Power consumption	max. 450 W (80 subscribers)

ORDER NUMBER	DESCRIPTION	SHIP WEIGHT
1009620000	AlphaCom E20 with 2 ASLT boards for 12 subscribers	19 kg
1009291100	AlphaPro E Professional, programming tool	HW dongle

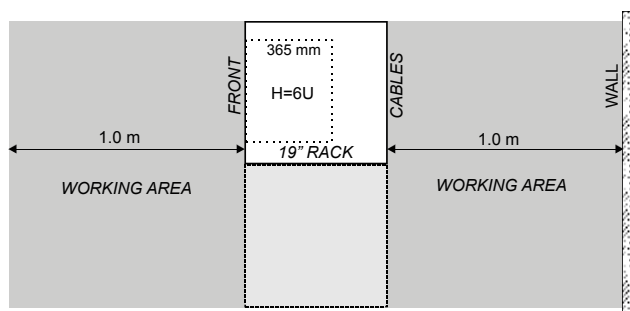
ALPHACOM E20 FOR 19" RACK MOUNTING - AC - VERSION 10

Temperature	0 to +35°C / +32 to +95°F environment
Humidity range	10% to 90% RH
Connections: Feature cards Traditional intercom Analogue telephones IP Intercom IP telephones and DECT Entertainment channels Remote control outputs Remote control inputs Serial port Serial port Ethernet	18 slot positions Max. 102 Max. 204 Max. 552 Max. 552 6 on APC board + 16 per AGA board 6 per ASLT subscriber board 6 on APC board 1 x RS232, RJ-45 1 x RS232/RS422/RS485, RJ-45 2 x 10/100 Mbps, RJ-45
Traffic capacity: SIP trunks VoIP AlphaNet Digital trunks Analogue trunks	30 channels 30 channels 32 channels 6 channels
IP protocols	IP v4/v6 - TCP - UDP - Telnet - FTP - NTP HTTP 1.1 - Syslog - SNMP v2c - SIP - RTP - RTCP - VoIP AlphaNet - STENTOFON data
Audio technology	High-Resolution 1-Bit Audio - High-Fidelity 40 Hz-18.5 kHz - Wideband 7 kHz (G.722) - Narrowband 3.4 kHz (G.711) - Adaptive Jitter Buffers - Adaptive Time Synchronization
EMC	Emission: IEC 61000-6-3, IEC 61000-6-4 Immunity: IEC 61000-6-1, IEC 61000-6-2
Compliance	CE, DNV, Report no. 97-1341, EN 60950

NETWORKING



INSTALLATION



CONNECTIONS

Up to 4 units may be mounted in one 19" rack if sufficient ventilation is provided. It is recommended to mount a 24 VDC cooling fan module on top of each exchange unit.

The two-pair star wired intercom cables are connected to connection boards on the cabinet DIN rail or in a separate distribution field.

Each subscriber line card provides 6 freely programmable Remote Control Outputs (RCO's).

Two RJ-45 Ethernet terminals on the IP filter board are used for IP LAN and WAN communication.

The serial ports with RS232 and RS422/RS485 interface are used for interface to equipment using these protocols. Eth0 is also used for programming PC.

6 program distribution sources can be connected to the APC board via an optional program connection board. Up to 32 extra programs may be added using AGA boards, 16 programs per board.

The optional program connection board has input for 6 Remote Control Inputs (RCI) which can initiate programmed actions.

The exchange is powered from the mains.